

# SINGLE-GANG ASSEMBLY

## 200AMP 480VAC

Catalog No: E1-R200-480-200-65MEW-SP-221923

Item No: 2219-23

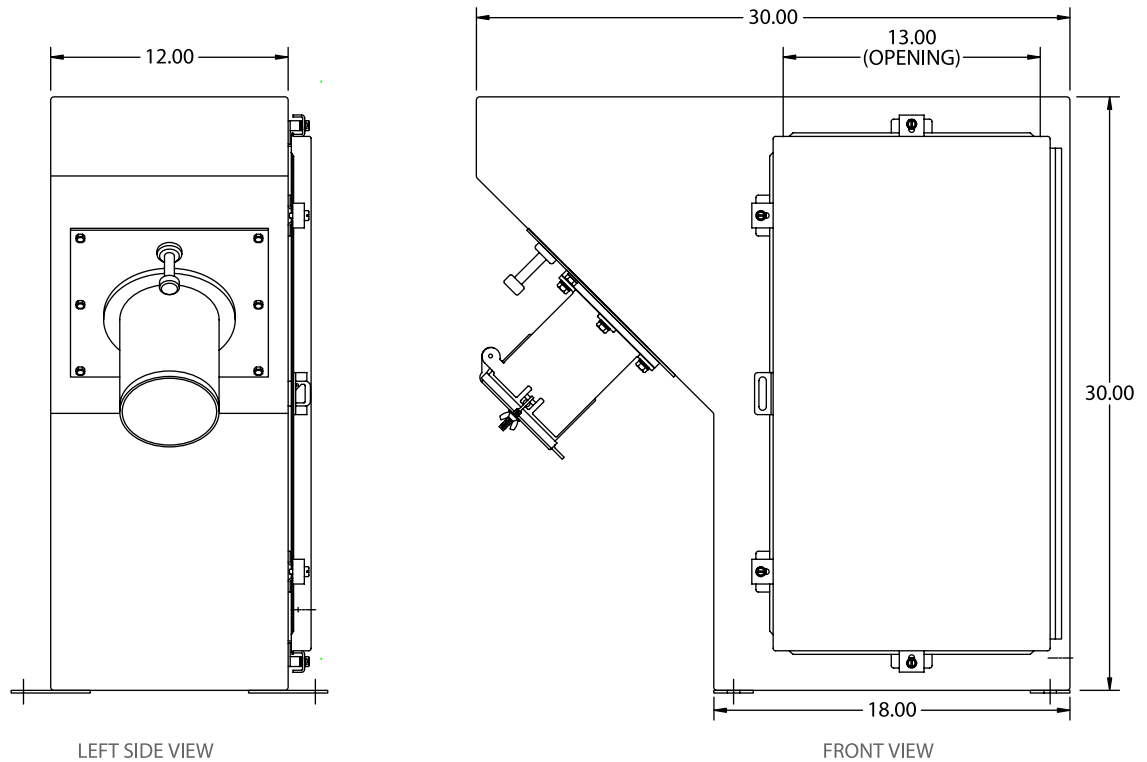


- Heavy Duty Stainless Steel Enclosure Resists Corrosion & Abuse
- Electrically - Interlocked Power Module with Manual Disconnect
- UL Listed Circuit Breaker Protects Operator & Equipment
- Nickel Plated Brass Contacts & Unique Outlet Design
- Mates with Appleton® AP20034CD Male Plug

# SPECIFICATIONS

Catalog No: E1-R200-480-200-65MEW-SP-221923 Item

No: 2219-23



## RATING:

Receptacle -	Appleton® ADR20034, 200A 600VAC
Circuit Breaker -	200A Trip / 65,000AIC @ 480VAC with shunt trip
Environmental - (With mated plug or screw cover)	IP56 per IEC 529 Type 4X capable per NEMA 250, UL 50/508, CSA 22.2
Terminals -	(3) Phase & (1) Ground pressure type screw terminals

## MATERIALS:

Stainless Steel -	Enclosure (powder-coated) Frame, On/Off Rod, Interlock Mechanism, and all Fasteners
Polyester w/ Fiberglass -	Contact Carrier
Brass -	Contact Sleeves
Aluminum (Copper Free) -	Screw Cover / Snap Cover, Receptacle Housing
Neoprene (CR) -	Gaskets, Cover Seals

## APPROVALS:

UL/cUL Listed Module • UL 489 Listed / CSA Certified Molded Case Circuit Breaker  
UL Listed Receptacles

## ACCESSORIES / PARTS:

Description	Item No.	Description	Item No.
• Circuit Breaker	4020-56	• Receptacle & Contact Sleeve Assy	4010-78

## ESL Power Systems, Inc.

2800 Palisades Drive • Corona, CA 92880-9427

Tel: (951) 739-7020 • (800) 922-4188 • Fax: (951) 739-7048

www.eslpwr.com • e-mail: info@eslpwr.com

©2012 ESL Power Systems, Inc.  
2219-23  
120823